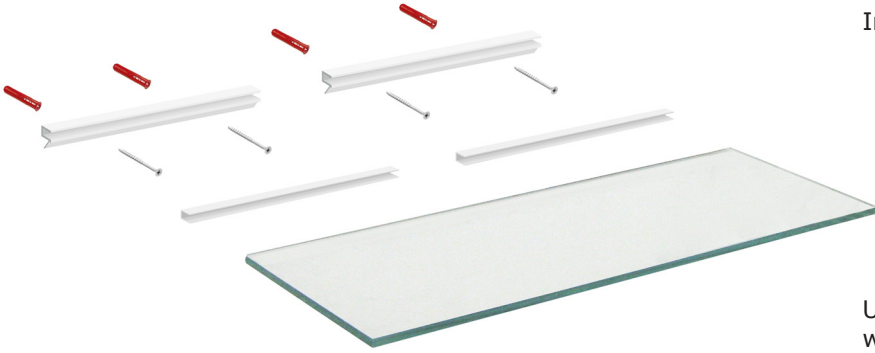
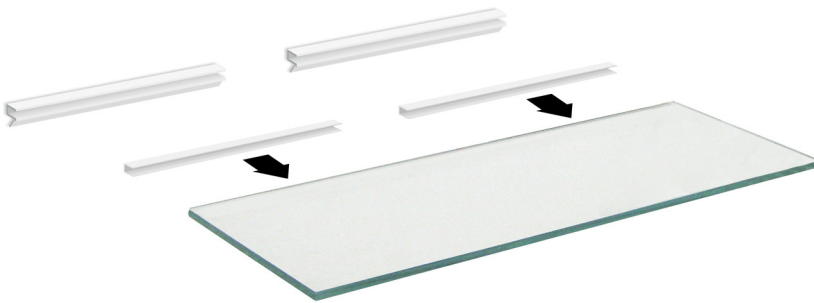


Installation of **Glass Shelf Bracket:**

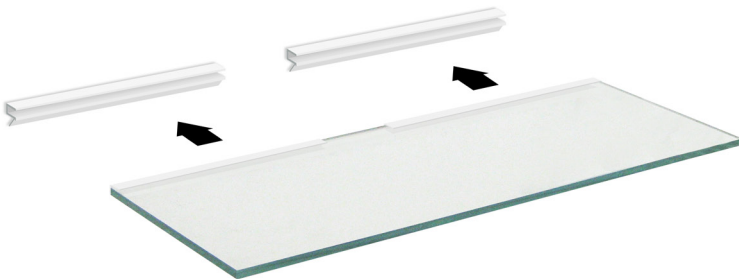


Using your brackets, mark a straight line where you want the shelf to be, and mark the alignment of the holes. Bare in mind you will be wanting a **10cm gap** between the 2 brackets!

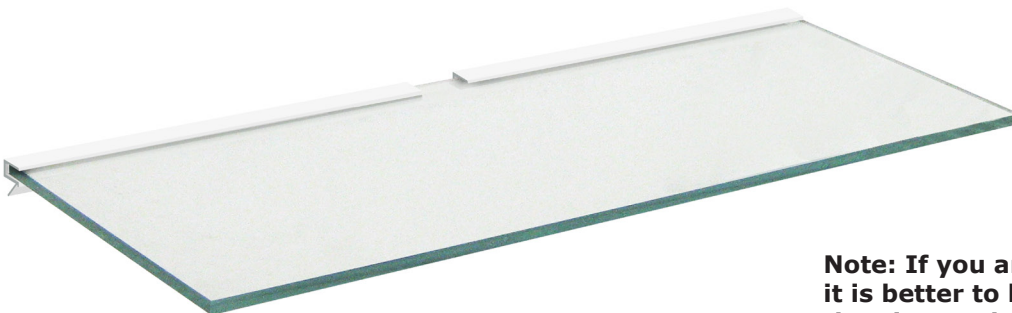
Note: Use a No.5 drill-bit when drilling, if using the screws provided



Slip the **2 plastic strips** on to your glass. One on the left touching the edge, and the other on the right touching the edge also.



Now push the glass in to the brackets, making sure it is **straight and aligned** neatly on both sides.



Note: If you are using thick cables, it is better to hold them in place and then insert the glass. It's designed in this way, so the glass fits close to the wall.